

May 5, 2020

Dear Colleagues,

This email is to update you regarding the results of the COVID-19 Impact Survey that closed last week. As promised the raw data has been made available on UF's website. The survey was completed by approximately 60% of our faculty from across the district. As expected, the COVID-19 crisis has impacted our faculty and their families dramatically. Having this data allows our bargaining team to address concerns that will alleviate the stress that our faculty is experiencing during this far-reaching and ongoing crisis. Please be on the lookout next week for updates regarding negotiations of a temporary MOU, as we hope to meet soon with the District.

Attached is an info-graphic that highlights some of the findings.

- 1 out of every 10 respondents had a loss or impact on healthcare coverage for dependents,
- 62% of respondents lack a fully adequate workspace or privacy needs to work from home
- 82% of respondents believe it is extremely/somewhat important to have a vaccine for COVID-19 before returning to teach on campus.
- 1 out of 3 respondents expressed frustration and distress regarding lecture/lab parity in the *Individual Concerns* comments section.
- Respondents have spent an average of \$571 out of their own pocket to pay for expenses related to the transitioning to distance education.

While we continue hearing "we're in this together," the reality is that our faculty is impacted substantially more than those making quarter-million dollar salaries and above. We hope that this data will be an eye opener to the District regarding the inequities that are antithetical to the purported values.

Thank you to everyone that participated in the survey and provided our faculty with this valuable information.

In Solidarity,

Mohammad M. Abdel Haq, M.A.  
Professor of Sociology  
UF Lead Negotiator  
Fullerton College, Fullerton

*"Power concedes nothing without a demand. It never did and it never will"* - Frederick Douglass

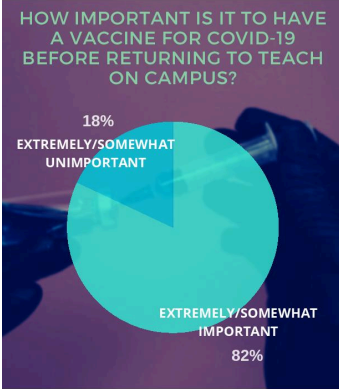
# UNITED FACULTY OF NORTH ORANGE COVID-19 SURVEY

60% Voter Turnout Rate

1 out of 10 respondents have had a loss or impact on healthcare coverage for dependents because of COVID-19

95% of respondents support one or more family members

62% of respondents lack the adequate work space or privacy needs to work from home



## LECTURE/LAB PARITY

1 out of 3

Individual Concerns comments expressed their frustration and distress regarding lecture/lab disparity

## FINANCIAL IMPACT

1 out of 3 respondents stated that the District has provided *little to no* financial support with expenses related to remote learning

1 OUT OF 4 RESPONDENTS HAVE EXPERIENCED SOME SORT OF INCOME LOSS IN THEIR HOUSEHOLD DUE TO COVID-19

The respondents have spent an average of \$571 out of their own pocket to pay for expenses related to the transition to distance education